

Leveraging Informatics to Improve Efficiency, Reduce Burnout, and Improve Patient Outcomes

Kristin B. McCabe-Kline, MD, FACEP, FAAEM, FACHT
Chief Medical Information Officer, AdventHealth Central Florida Division
EMS Medical Director, Flagler County/City of Palm Coast/City of Flagler Beach
Kristin.McCabe-Kline.MD@AdventHealth.com

Cell (386) 283-2326

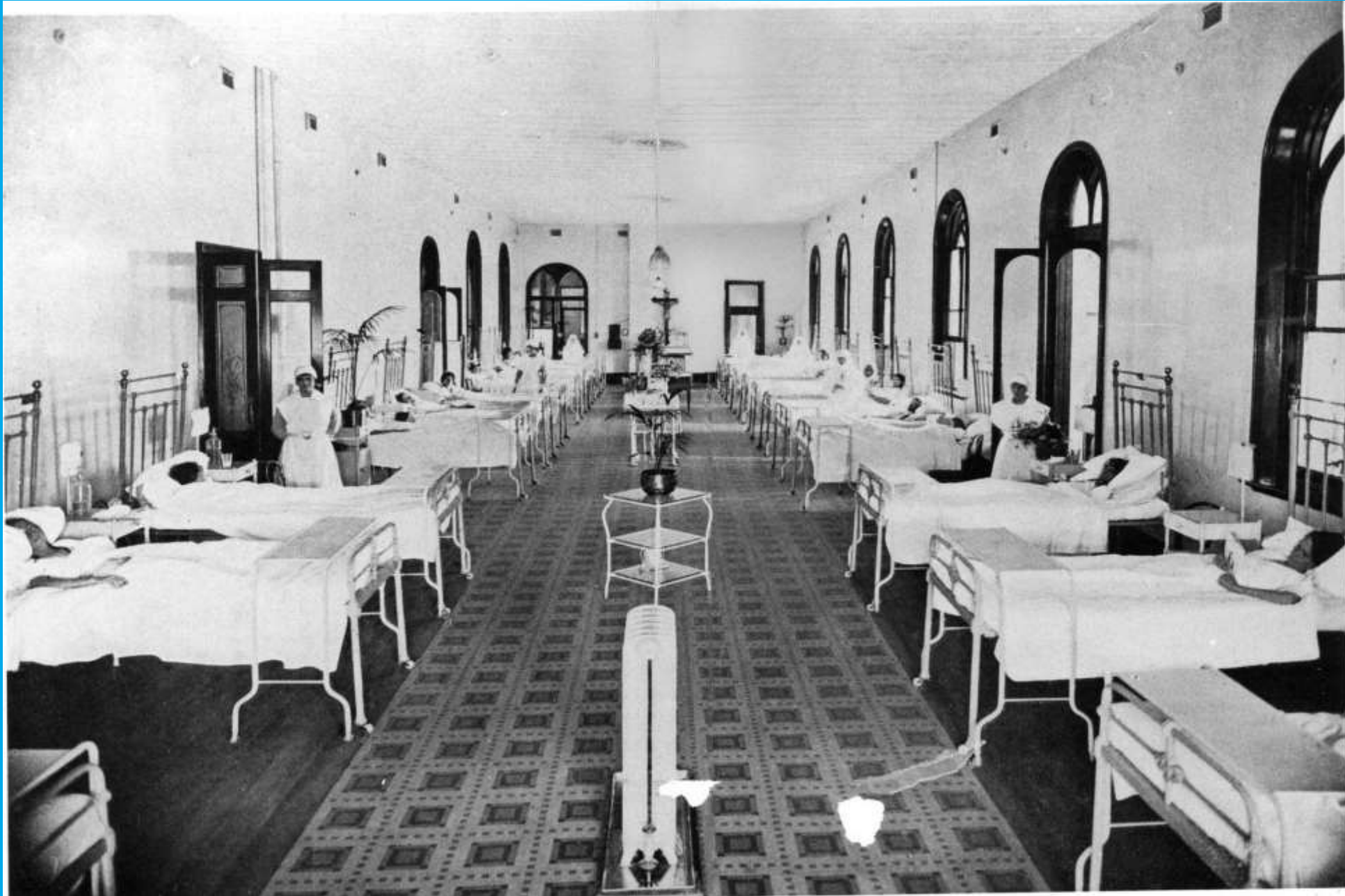
Disclosures

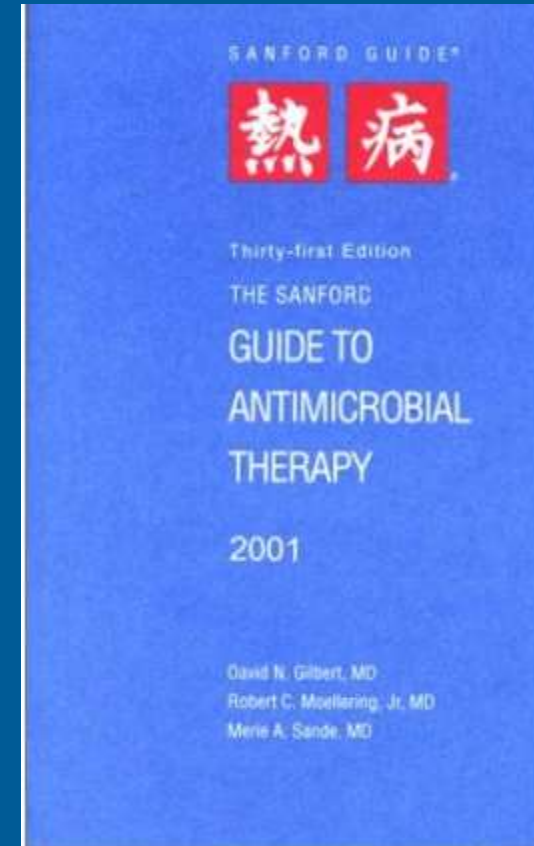
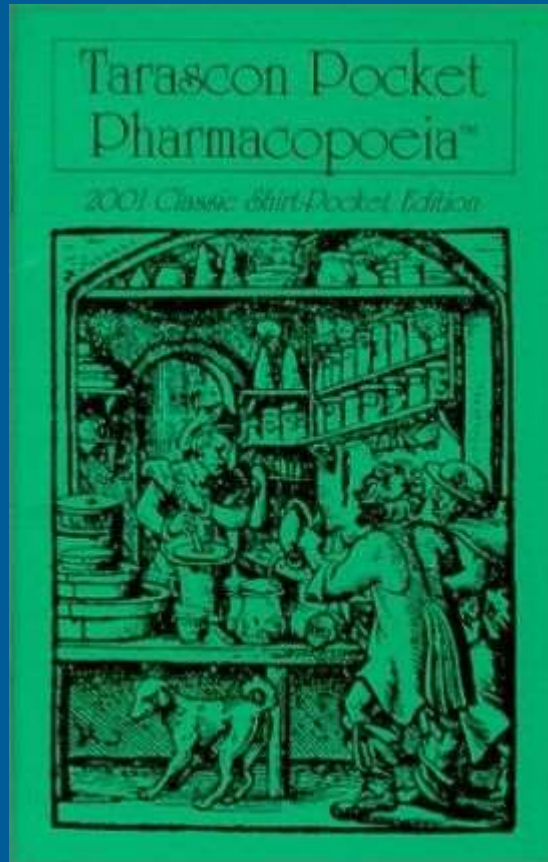
No Financial Relationships. However...

- *Fierce patient advocate
- *Dedicated to systems level solutions
- *Committed to care teams
- *Foundational belief of benevolence

OBJECTIVES

- *Clinician Efficiency
- *System Efficiency
- *Clinician Burnout
- *Clinician Support
- *Patient Outcomes
- *Hope for the Future








NEW
RITTER
MODEL "F"
CENTURY
X-RAY


MAXIMUM ACCURACY
WITH
MAXIMUM SAFETY







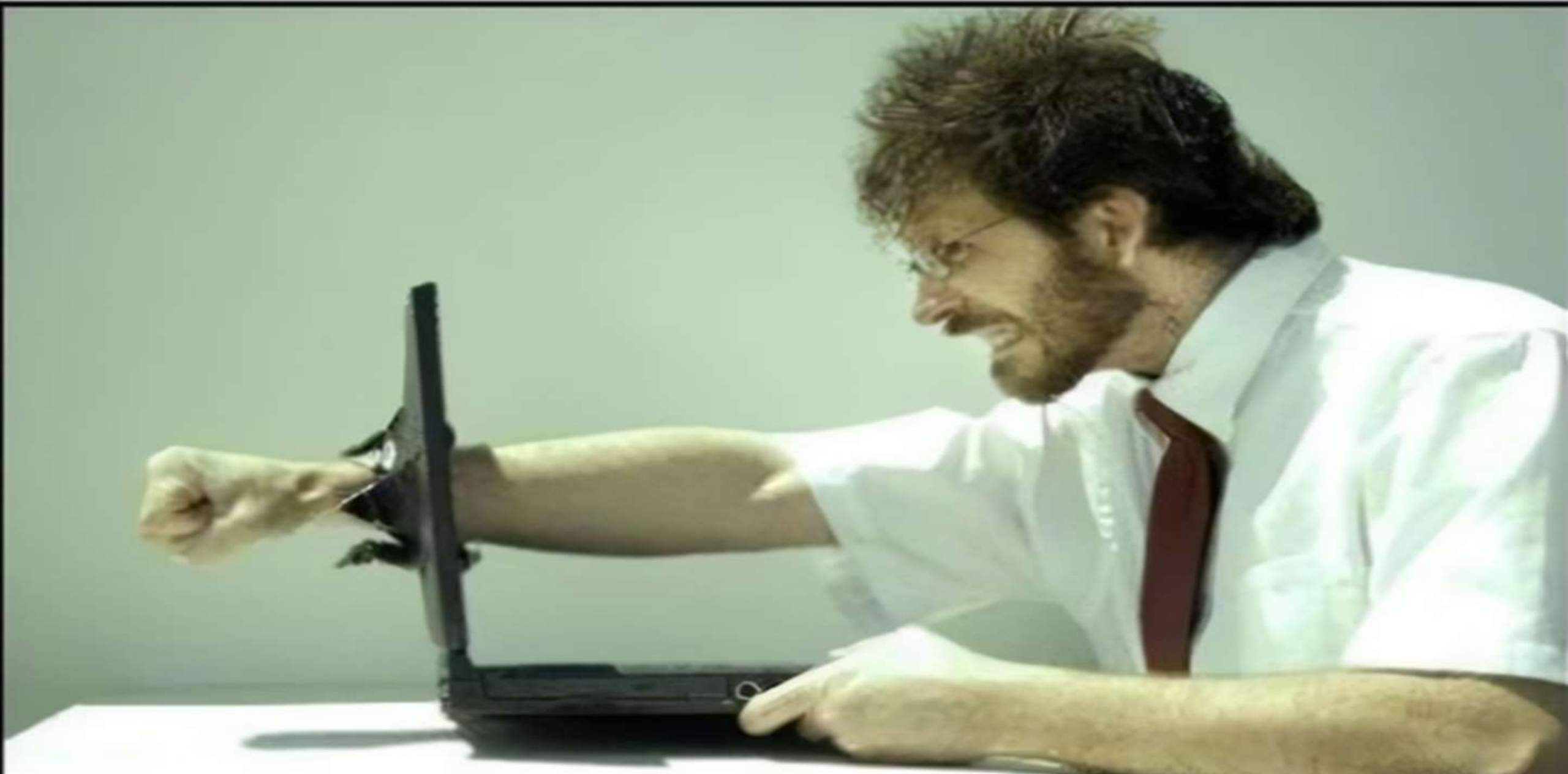
WORK SMARTER, NOT HARDER



TAKT PLANNING

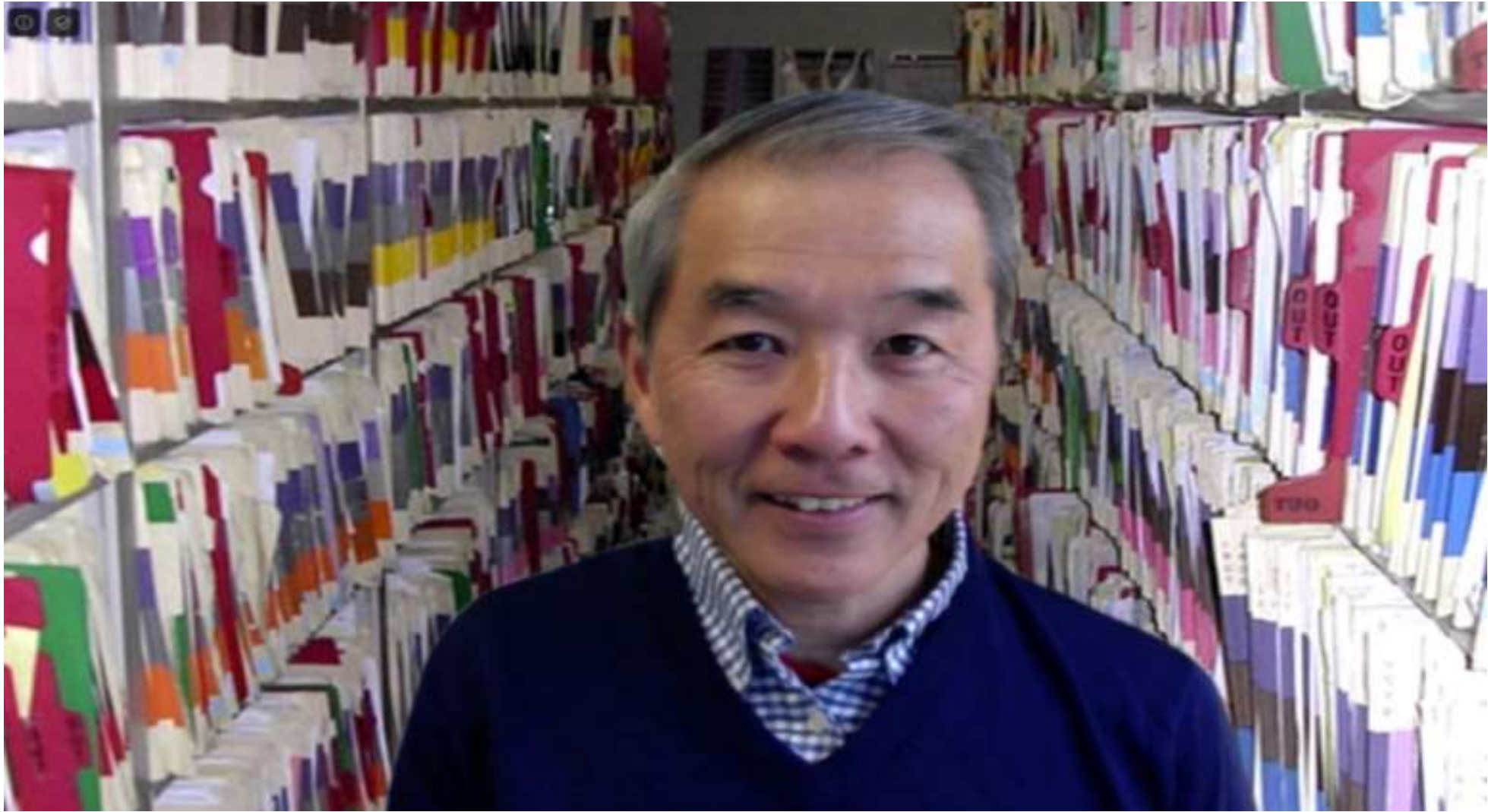
Plan & Prevent vs. React





“For every hour spent with patients, physicians spend 2 hours on electronic health records (EHR) and desk work, according to an Annals of Internal Medicine study.”

www.jwatch.org/fw111995/2016/09/06

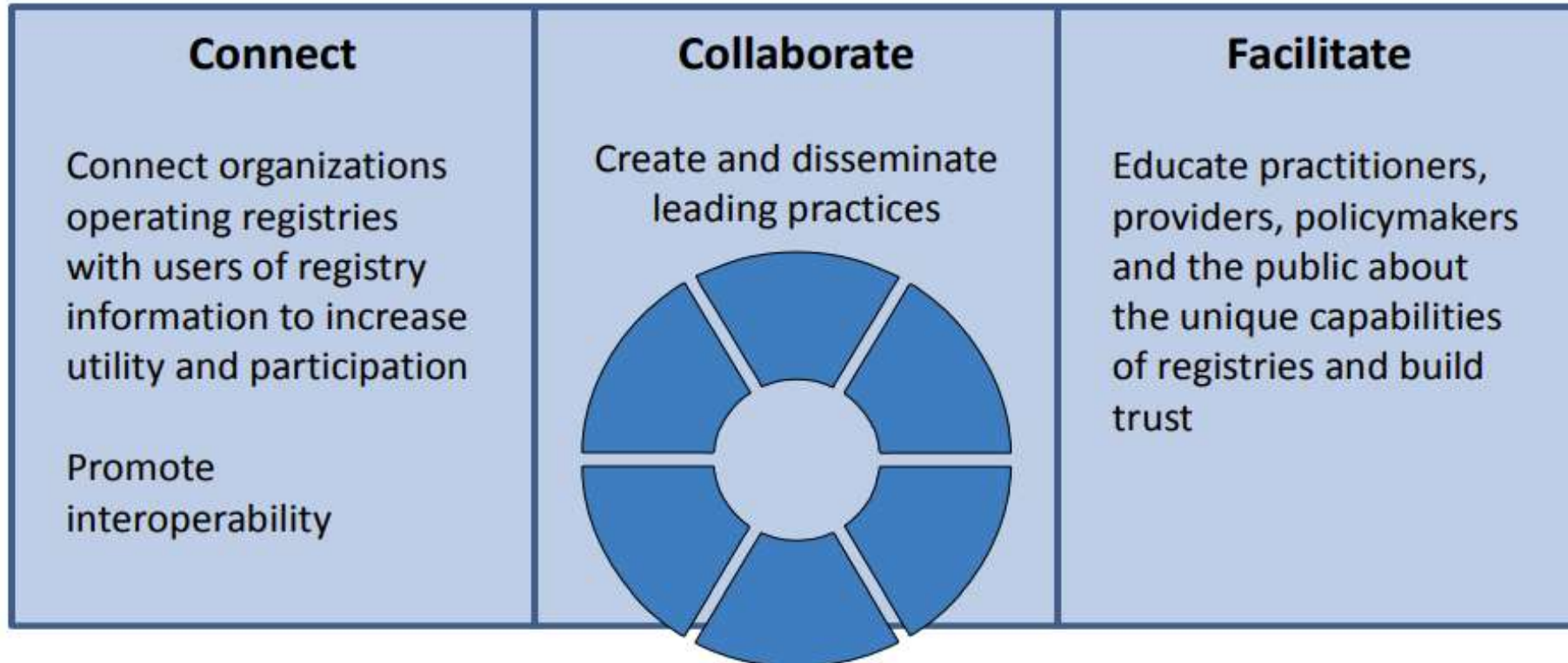


Does the EHR really cause burnout?

- 58.8% of participants were either satisfied or very satisfied with the EHR.
- 60% of participants either agreed or strongly agreed that EHR systems improve communication, enhance patients care and improve patient safety.
- >50% of the participants felt that EHR systems improve their job satisfaction and clinical workflow.

NQRN[®]

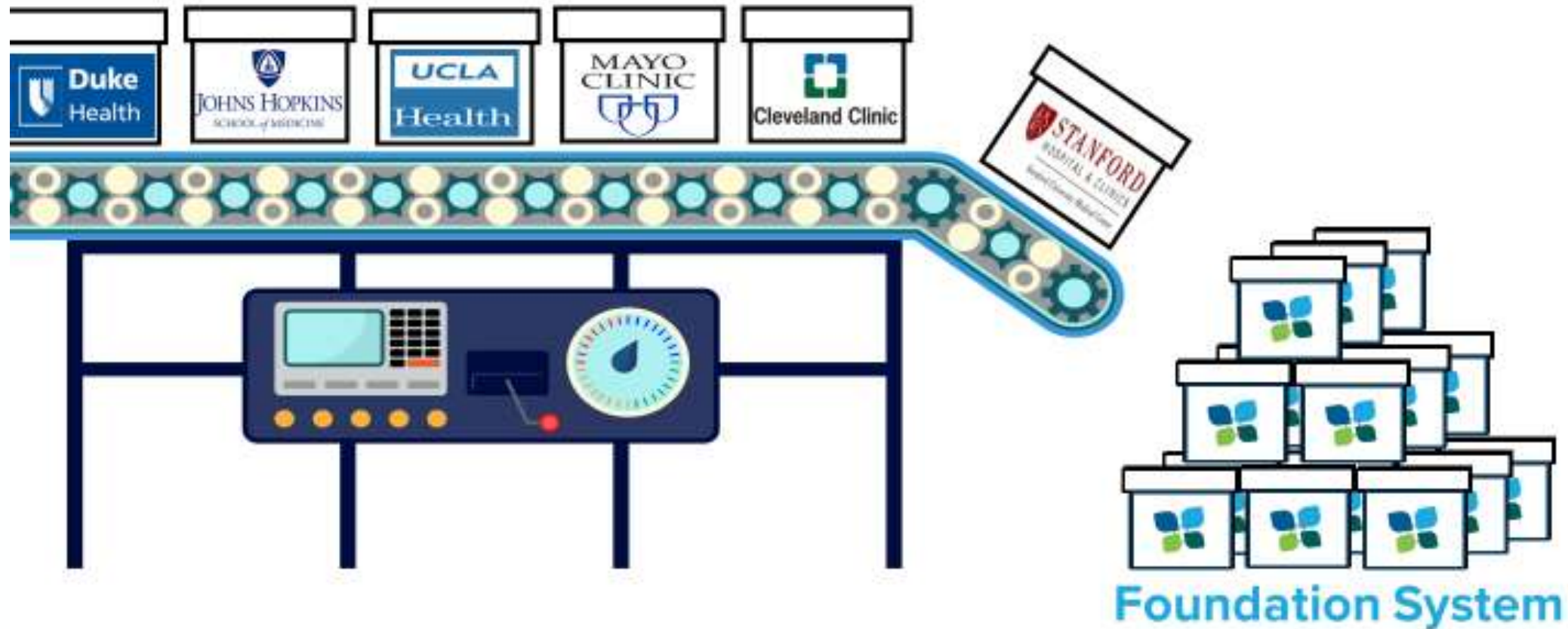
National Quality Registry Network



Registries Hub

“Physicians would need to read approximately 6,000 articles per month to keep up with relevant medical literature supporting the practice of evidence-based medicine.”

<https://www.ncbi.nlm.nih.gov/pmc/articles/PMC521514>



Epic has formed a sharing network to which its clients contribute their best clinical practices, workflows, templates and ideas.

“As supercomputing, science, and medicine continue to converge, the conversion of data to knowledge, and sharing of such knowledge, has become a crucial component for achieving precision medicine and personalized patient care.”

<https://www.ncbi.nlm.nih.gov/pmc/articles/PMC4381462>



Extending the Healing Ministry of Christ



Kristin B. McCabe-Kline, MD, FACEP, FAAEM, FACHT
Chief Medical Information Officer, AdventHealth Central Florida Division
EMS Medical Director, Flagler County/City of Palm Coast/City of Flagler Beach
Kristin.McCabe-Kline.MD@AdventHealth.com
Cell (386) 283-2326